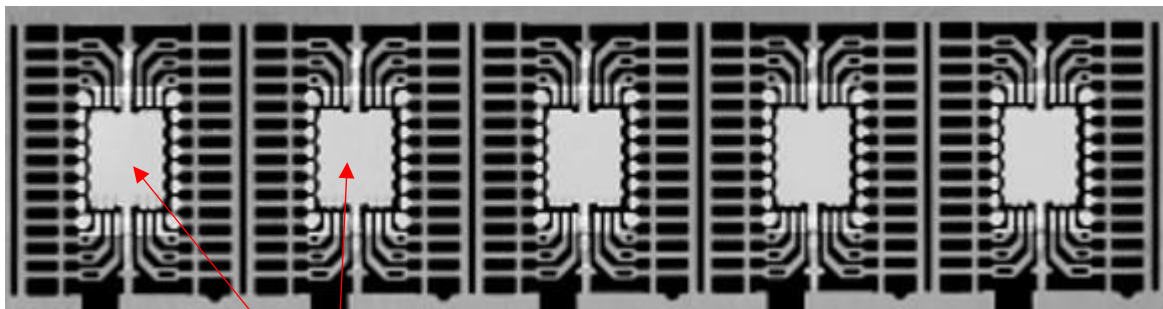


Training Workshop on Machine Vision (Image Processing Fundamentals)

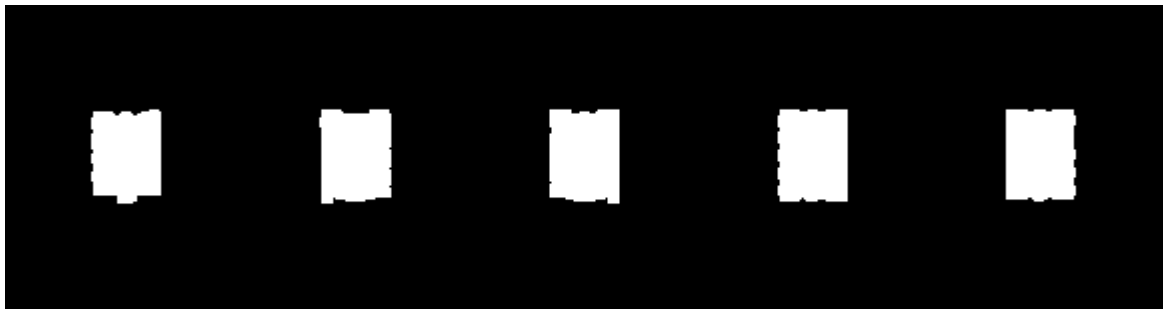
Activity 14 – Apply morphological operations on leadframe to find centroids of die attach pads

Learning outcome: Learn how to apply morphological operations to locate objects

Task: Figure below shows a leadframe. In order to initiate autocropping it is necessary to find the centroids of the die attach pads. Apply suitable thresholding and morphological operations to remove all the various parts of the leadframe leaving only the die attach pads as shown.



Die attach pads



Output image