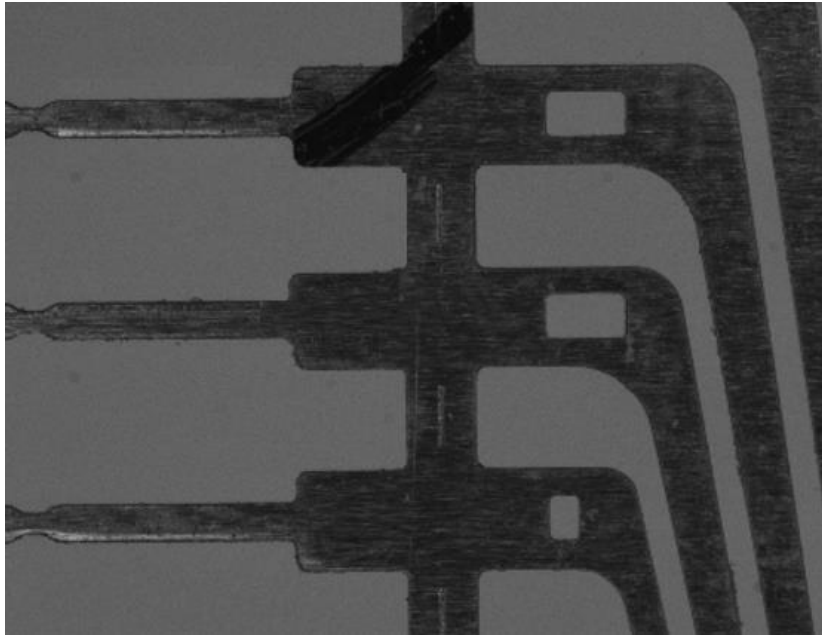


## Training Workshop on Machine Vision (Image Processing Fundamentals)

### Activity 2 – Effect of gamma correction on image

*Learning outcome:* Learn how gamma correction using different gamma values affects image

*Task:* Figure below shows part of a leadframe. Write OpenCV-Python codes to apply gamma correction with the following gamma values:  $\gamma = 0.5$ ,  $\gamma = 0.7$ ,  $\gamma = 1.5$ . How does the gamma value affect the image?



(Source: H. Martel, P. Chaturvedi, L. Dumoulin, Surface inspection of stamping defect on copper lead frames, Materials Science (2004))